

**BEESTON**  
CAMERA CLUB

# Programme 2018-2019



*South Bank Reflections by Nick Hopwood*

Affiliated to the North & East Midlands Photographic Federation

## BEESTON CAMERA CLUB

### COMMITTEE MEMBERS 2017/18

President .....	David Gibbins	
Vice President .....	Neil Hopperton	
Hon Vice Presidents .....	Alan Thompson	Derek Martin
.....	Dave Severn	Iris Martin
Hon Secretary .....	Eric Miller	
<a href="mailto:clubsecretary@beestoncameraclub.co.uk">clubsecretary@beestoncameraclub.co.uk</a>		
Hon Treasurer .....	Linda Desmond	
Programme Secretary .....	Derek Martin	
Webmaster .....	Neil Hopperton	
<a href="mailto:clubwebmaster@beestoncameraclub.co.uk">clubwebmaster@beestoncameraclub.co.uk</a>		
Competition Secretary .....	Celia Clayton	
<a href="mailto:beestoncameraclub@gmail.com">beestoncameraclub@gmail.com</a>		
Annual Exhibition .....	Mike Leatherland	
External Exhibitions/Comps .....	Iris Martin	
Publicity Officer .....	Keith Collins	
N&EMPF Delegates .....	Linda Desmond	Derek Martin
Committee Members .....	Alan Booth	David Hunt
.....	Anne Lyburn	
Independent Examiners .....	Dave Severn	Jan Taylor

### SUBSCRIPTIONS 2017/18

Adult .....	£48.00
Under 18 .....	£35.00
Visitor .....	£3.00

### ABOUT US

Beeston Camera Club meets on Thursday evenings from September to the end of April, 7.30 for 8pm at the Royal British Legion, Hall Croft, Beeston, NG9 1EL.

We have a varied programme including talks from professional photographers showing different types of photography, competitions and evenings where we share our own photos and swap tips and techniques. We welcome new members and visitors, so if you are thinking of joining, you can be assured that you will be welcomed into a friendly group of photographic enthusiasts.

## PROGRAMME 2018/2019

### Sat 1st September to 31st October HERITAGE CENTRE EXHIBITION

There will be an exhibition of members' work at the Canalside Heritage Centre, Beeston Lock. Opening event on Monday 3rd September at 7pm do come along to see a variety of work.

### Sept 6th INTRODUCTORY EVENING - Neil Hopperton

Traditionally we open our season with a social gathering starting with a selection of images followed by a buffet provided by the club. We would like to encourage new members so bring along a friend who may be interested in joining. A chance to get reacquainted after our summer break.

### Sat 8th September HERITAGE OPEN DAY

We will be exhibiting members' work at Barton's bus depot as part of the local group

### 13th WOLLATON PARK, GREEN OASIS IN AN URBAN SPRAWL - Dr David Glynne Fox

David is an author, historian, wildlife photographer and lifelong naturalist. He is a member of Universal Images Group Pictures library and was formerly with Oxford Scientific Films. He has had work published in various books, magazines and journals worldwide including BBC Wildlife, British Aerospace and International Falconer. He is a visiting lecturer at Nottingham University's MSc Degree In Biological Imaging and Photography Course and curates the University's natural history collections. Tonight he is going to tell us about Wollaton Park, a place all of us can visit, so come along and enjoy an interesting start to our season.

### 20th MAINLY STREET - Darren Leeson LRPS

Darren has been interested in photography since he was 10 years old when he used to watch his father developing his own photographs in his darkroom but now he specialises in street photography as this is where he believes much of the pathos, comedy and irony of life can be found. He often uses monochrome to emphasise the contrasts and gritty realities of life on the street. His talk shows pictures from Europe and China as well as the UK but he does include other genres to cater for all interests. He will explain some of the techniques he uses as well as the kit he carries about with him. He is a member of Worcester Camera Club and has seen many photographic talks himself so he tries to make his enthusiastic, entertaining and informative. See some stunning examples of his work at [www.darrenleesonpics.co.uk](http://www.darrenleesonpics.co.uk) and [www.street-fotografie.co.uk](http://www.street-fotografie.co.uk)

### 27th OPEN EVENING

An evening devoted to club members showing their own photographs, demonstrating photographic or computer techniques and sharing tips. Details will be announced nearer the time.

*Don't forget the competition next week.*

**Oct 4th FIRST COMPETITION judged by Peter Yeo FRPS DPAGB APAGB**

**11th BACK GARDEN SAFARI - Paddy Ruske**

An interesting and different AV presentation in which this Lichfield photographer who was Highly Recommended in the British Wildlife Photography Awards of 2016, will show us how he set up his garden to take wildlife photographs. He subtitled his talk How To Be A Lazy Natural History Photographer – that certainly appeals to me. See [www.ruskepics.co.uk](http://www.ruskepics.co.uk)

**18th MALCOLM IN PRINT - Malcolm Sales**

Local photographer Malcolm Sales has given us Smartphone Photography and he has also judged for us. Tonight he will show a selection of his prints so it should be an entertaining evening See [www.buttercrossphotography.co.uk](http://www.buttercrossphotography.co.uk)

**25th PHOTOGRAPHY IN THE PEAK DISTRICT - Tesni Ward**

A combination of landscapes and wildlife from this Chesterfield based photographer. As well as sweeping valleys and moorlands, the Peak District is also home to a wide variety of wildlife species making it a fantastic location for any photographer. This illustrated talk covers some of the most beautiful locations and species within the national park along with tips on how to make the most of the opportunities offered. See [www.tesniward.co.uk](http://www.tesniward.co.uk)

**Nov 1st SECOND COMPETITION judged by Steve Roper APAGB CPAGB**

**8th ICELAND - Robert Falconer**

Robert has visited us in previous seasons and tonight will entertain us with photographs of Iceland. From glaciers to geysers, from icebergs to Northern Lights – amazing photographs from his 2000 mile journey through this beautiful country. [www.rob-falconerphotography.co.uk](http://www.rob-falconerphotography.co.uk)

**15th THROUGH MY VIEWFINDER - Warren Alani ARPS DPAGB AFIAP**

A member of the famous Smethwick club, Warren's work has featured in the London Salon. He has won many national and international awards and tonight brings his highly recommended print lecture to Beeston. From portraits to landscapes to street style snapshots, if there is a story to be told from a picture Warren relishes the challenge of capturing and retelling it. Something for everyone here including, intriguingly, photos of a subject very rarely photographed. See [www.warrenalaniphotography.com](http://www.warrenalaniphotography.com)

**22nd OPEN EVENING**

Another opportunity to do something a bit different. We may repeat the auction of camera kit as part of the evening, which was very successful a couple of years ago.

**29th THIRD COMPETITION judged by Ralph Duckett MPAGB APAGB EFIAP**

**Dec 6th LIGHTROOM ESSENTIALS: LIBRARY AND DEVELOPER - Simon Watkinson ABIPP**

Back by popular request, this time to tell us how to use Lightroom. Simon has a great style of delivery and can explain complicated techniques in a

straightforward and understandable manner. He will be covering the importing of files, import settings and organisation within the library (keywords, ratings, collections and various views). In the Developer he will be covering the histogram and how it relates to the basic developer- giving you a full understanding of the controls; and a comprehensive overview of the other palettes available in developer, including Black & White process and presets. This lecture will cover the understanding of RAW files to help you better relate when using Lightroom Software. To conclude there will be an overview on export, for those wishing to send to print, email etc. [www.world-infocus.co.uk](http://www.world-infocus.co.uk)

**13th THORESBY - THE END OF THE MINE - Chris Upton ARPS**

Another return visit from this local photographer who says his desire is to inspire, educate and entertain. He has been well received at Beeston in the past and this time he will present the story of the project he undertook on Thoresby Colliery, the last pit in Nottinghamshire which closed in July 2015 bringing to an end 900 years of mining in the county. Chris spent nine months on the site producing some stunning images. Plenty of hints and tips on how to create a project. See [chrisuptonphotography.com](http://chrisuptonphotography.com)

**20th CELIAS CHRISTMAS QUIZ plus buffet**

A bit of fun from Celia and a relaxed social end to the season together with food brought by members.

---CHRISTMAS BREAK---

**2019 Jan 10th FOURTH COMPETITION judged by Gary Langley DPAGB**

**17th STEEL WOOL PHOTOGRAPHY - Dale Mears**

And now for something completely different. Dale specializes in producing pictures of spinning and burning wire wool in local landscapes. He has been particularly recommended by another local club so do come along and see the spectacular results for yourself. Follow him on Facebook @DaleMearsPhotography

**24th NEMPF PDI SHOW**

Our annual showing of the accepted PDIs in the North & East Midlands Photographic Exhibition. Stunning images from all the N&EMPF clubs, hopefully with plenty from Beeston for you to admire.

**31st OPEN EVENING**

A third chance of the season to show a few of your own images

**Feb 7th FIFTH COMPETITION judged by Sue Wilson DPAGB**

**14th BOOTS TO BALLET SHOES - Caroline Bridges**

Caroline is a commercial portrait and lifestyle photographer based in Belper and inherited her love of photography from her father. She is particularly keen on gun dogs and field sports and has had her work published in Field Magazine. In 2015 she was second in Dog Photographer of the Year and her

image was used as the backdrop to Chanel 4's coverage of Crufts. But as the title suggests her talk tonight contains many genres as she has also had images published in Coast and Good Housekeeping Magazine. Admire the range of her work at [www.carolinebridgesphotography.co.uk](http://www.carolinebridgesphotography.co.uk)

#### **16th to 28th March - ANNUAL EXHIBITION AT BEESTON LIBRARY**

A fabulous showcase for the club, member's prints are displayed in the library.

#### **21st INFRARED MONOCHROME PHOTOGRAPHY - Bill Aillsopp LRPS**

A PDI talk from Bill, who was very well received a couple of years ago. on infrared photography for which he used a converted Fuji camera but as he says pretty much any camera will do.

#### **\*\*\*WEDNESDAY 27th 4-WAY COMPETITION, ROLLS ROYCE LEG**

#### **28th OPEN EVENING**

The final opportunity to share your photos and tips among members. Let us know if you have any ideas.

#### **Mar 7th SIXTH COMPETITION judged by Erica Oram CPAGB AFIAP BPE2**

#### **14th ISLAND HOPPING - Peter Yeo FRPS DPAGB APAGB**

Peter has judged for us on many occasions including earlier this season but tonight you can judge the quality of his work. He will bring sets of prints on a variety of themes, generally travel and including Venice, the isles of Harris and Lewis, and other topics that get his attention. There will be A3 prints, mostly but also A2, all on Fotospeed papers. He will bring a selection of Fotospeed papers for sale at a good discount.

#### **21st BEST OF BEESTON COMPETITION Judged by Ian Pinn**

This season the themes are: 1 YELLOW 2 MOVEMENT 3 CITY 4 TALL  
5 COLD 6 OLD FASHIONED You choose 4 from the 6, digital only.

#### **28th AN EVENING WITH HOWARD BAGSHAW ARPS MPAGB**

Howard is an AV specialist who last visited us a few years ago and gave us a wonderful evening. He will be bringing his latest creations for our delight and will explain a little about how AVs are made. An evening not to be missed.

#### **Apr 4th SEVENTH COMPETITION judged by Dave Hollingworth**

THEME: CURVES AND/OR LINES.

#### **11th YELLOWSTONE, THE SOUTH WESTERN USA & ICELAND a digital photo essay**

#### **Peter Clark FRPS EFIAP/p APSA MPSA**

Peter has specialised in landscape photography for over 30 years his philosophy being that a successful pictorial image will stand on its own without the need for title or explanation and should include one or more of the following elements – impact, drama, mood and atmosphere. All this is achieved through careful choice of location, subject matter and

composition. See his website [www.monolandscapes.talktalk.net](http://www.monolandscapes.talktalk.net)

#### **18th HILDA THURMAN A4 COLOUR PRINT COMPETITION AND BUFFET**

Judged by the audience, entries are A4 unmounted colour prints with minimum manipulation.

#### **25th ANNUAL GENERAL MEETING – Your chance to have your say on club affairs**

#### **May 2nd ANNUAL DINNER Venue to be confirmed**

### **CLUB COMPETITIONS**

During the season, the club runs various competitions on a monthly basis which give members an opportunity to see their work compared to that of fellow members by an outside independent judge who gives each image a mark out of 20. There are four categories, monochrome print, colour print, monochrome projected digital image and colour projected digital image (PDI). Members are allowed 1 entry in each category and may enter as many or as few categories as they wish. The final competition is a themed competition. There are 7 competitions in total. Only the best 4 scores are counted plus the theme so the total is out of 100. Awards are given to winners in each category and other awards are given at the President's discretion to the Best Beginner and Most Improved as well as Best All-Rounder. There is also the Best of Beeston Digital Competition when members choose 4 out of 6 categories in which to enter digital images. On the final week of the season the club holds the Hilda Thurman Competition when the audience are the judge and vote for their favourite image. Full rules of all competitions are contained in this programme and are available to download from our website at [www.beestoncameraclub.co.uk](http://www.beestoncameraclub.co.uk).

### **ANNUAL EXHIBITION**

This is a chance for all members to have their prints seen by the public when the exhibition is held at Beeston Library usually during the month of March. There is no selection criteria but, owing to lack of hanging space, entries have to be limited to a maximum of 4 prints per individual and may be monochrome and/or colour and nature. The closing date for entries is usually the end of December and the images are judged by an external judge with winners in the following categories – Monochrome Print, Colour Print, Natural History and Most Creative Entry. All winners receive inscribed goblets their cost being covered by the small entry fee charged. The judge is also asked to nominate other entries for Highly Commended and Certificate of Merit awards. All awards are usually presented at the Library by the Mayor of Broxtowe who also presents The Millennium Bowl to the author of his/her favourite image from the exhibition. Entry forms are made available with full details usually during November/December.

### **EXTERNAL COMPETITIONS/EXHIBITIONS**

There are a number of external competitions and exhibitions that you may enter if you wish, many organised by camera clubs throughout the country.

Beeston members have had some success in these over the years and hope to continue in the future. Outside exhibitions are entered privately by individual members who must pay their own entry fees but there are several Inter Club competitions held during the season such as the one at Sileby. A successful 4-Way Competition has been organised over the past few years between Beeston, Derby City, Rolls Royce and Ilkeston Photo 2000 clubs.

#### **NORTH & EAST MIDLANDS PHOTOGRAPHIC FEDERATION ANNUAL EXHIBITION**

The main event that you will be urged to enter during the year is the North & East Midlands Photographic Federation Exhibition. Beeston Camera club is part of the Federation and this Exhibition is open to any fully paid-up members of camera clubs belonging to the Federation. A small entry fee is charged and the club collects entries on behalf of members. An independent panel of judges selects what they consider to be the best entries for showing in the exhibition which consists of prints and digital images with separate sections in each for monochrome and natural history. Winners are declared in the various categories and Highly Commended and Certificate of Merit Awards are also made. Entry forms will be available before the closing date in October. See [www.nempf.org](http://www.nempf.org)

#### **BEGINNER OR ADVANCED?**

At the club we believe that the best way to be judged is in relation to everyone else so we do not have a separate beginners section but at the end of the season, an award is given to the best beginner of the season. If you are unsure about entering your work in competition with other members then do not be afraid of asking for advice or bring your work along on a club night.

#### **COMPOSITES**

We follow the Photographic Alliance of Great Britain (PAGB) guidelines as to what is considered acceptable as a photograph. Digital photography is acceptable in all its forms including composites but there are main criteria that the club insist upon (1) the original image for any competition must have been taken using the photographic process (2) that triptychs (that is 3 pictures as 1 image) are not acceptable.

#### **JUDGES**

Finally a word about judges always a subject of much discussion in any camera club with Beeston being no exception. No judge will please everybody – in fact some judges will please nobody – as they all have their own opinions. The same image can receive totally different scores from different judges and indeed may well receive a different score from the same judge on another night. Some judges won't score less than 12, some won't score more than 19, whilst others seem to award every image the same mark! On the other hand judge's comments can be very constructive so listen to what they say as they may well help you to improve your photography. However always bear in mind that you should be enjoying your photography so you may wish to carry on taking photographs that you enjoy taking and not worry about what the judge says. The choice is yours.

## **COMPETITION RULES**

All competition entry forms and rules are available to download from the club website at [www.beestoncameraclub.co.uk](http://www.beestoncameraclub.co.uk)

#### **Prints and Projected Digital Images (PDI) Competition Rules**

1. In internal competitions (including Best of Beeston and the Hilda Thurman Competition), images can only be entered once as a pdi and once as a print and this must be in separate seasons. This does not apply to inter-club competitions or the annual club exhibition.
2. There are 6 open competitions and a final 7th competition with a theme. Each has these 4 categories:
  - Monochrome Prints
  - Colour Prints
  - Monochrome PDI
  - Colour PDI
3. You may enter a maximum of 1 image in each category for each competition evening with each category being judged separately. The same image may not be entered as a print and as a digital image in the same season.
4. Marks will be awarded out of 20 but only your best 4 marks in each category plus the themed competition mark will be counted so that the maximum score will be 100. If you do not enter the themed competition only your best 4 scores will count.
5. Images may be captured either by digital camera or scanned from the entrant's original slide or print. Laboratory scanning is permitted providing the original image was on negative, slide or print which was the work of the entrant.
6. Entries may be straight images with no manipulation, manipulated images or composites of several images providing that the originals were taken by the entrant using the photographic process. Wholly computer generated images are not permitted nor are triptychs.
7. All prints must be mounted with a mount size of 50 x 40cm. Other sizes will be rejected.
8. The title and entrant's name must be clearly marked on the back of the mount.
9. All digital images must be in JPEG format and should be at a maximum size of 1400 x 1050 pixels. The height of any digital image must not exceed 1050 pixels.
10. Entries must be made online via our website [beestoncameraclub.co.uk](http://beestoncameraclub.co.uk). Full instructions are on the website. You will need a password to enter. Last year's passwords are still valid but if you have forgotten or are a new member passwords may be obtained by emailing [beestoncameraclub@gmail.com](mailto:beestoncameraclub@gmail.com).
11. Print titles and digital images should be with the Competition Secretary on the club night one week before the competition but certainly no later than the Monday midnight prior to the competition.

12. The Competition Secretary has the right to refuse late entries.
13. ONLY FULLY PAID UP MEMBERS MAY ENTER THESE COMPETITIONS.
14. IN THE THEMED COMPETITION ANY ENTRY DEEMED BY THE JUDGE ON THE NIGHT NOT TO CONFORM TO THE THEME WILL HAVE 5 POINTS DEDUCTED.

Please note that the receipt of all email images will be acknowledged. If you do not receive an acknowledgement please contact the Competition Secretary at [beestoncameraclub@gmail.com](mailto:beestoncameraclub@gmail.com) as it is not possible to accept digital entries on the evening of the competition.

### Best of Beeston Competition Rules

1. This Competition is restricted to digital images only which must (a) have been taken during the last 12 months (b) and not been entered in any of the other monthly club competitions including The Hilda Thurman Competition. (But they may be entered in the Annual Club Exhibition.)
2. There are six categories each year which will normally be announced at the AGM and which will appear in the Club Programme.
3. Members may submit 1 image in any 4 out of the 6 categories.
4. Each category is judged separately and individual entries marked out of 20. The winner will be the entrant with the highest aggregate score (out of 80).
5. All digital images must be in JPEG format and should be at a maximum size of 1400 pixels wide x 1050 high. The height of any digital image must not exceed 1050 pixels.
6. Images may be captured either by digital camera or scanned from the entrant's original slide or print. Laboratory scanning is permitted providing the original image was on negative, slide or print which was the work of the entrant.
7. Images may be straight images with no manipulation, manipulated images or composites of several images providing that the originals were taken by the entrant using the photographic process. Wholly computer generated images are not permitted nor are tryptichs.
8. The preferred method of submission of digital images is by email to [beestoncameraclub@gmail.com](mailto:beestoncameraclub@gmail.com). Emails must include titles (as opposed to file name) and name of entrant. Entries on CD or Memory Stick will also be accepted.
9. Titles and digital images should be with the Competition Secretary on the club night one week before the competition but certainly no later than midnight on the Monday prior to the competition..
10. The Competition Secretary has the right to refuse late entries.
11. ANY ENTRY WHICH IS NOT CONSIDERED BY THE JUDGE ON THE NIGHT TO FIT THE CATEGORY WILL HAVE 5 POINTS DEDUCTED.

### Hilda Thurman Competition Rules

This competition is judged by the audience on the night.

1. The entry must not have been entered in any other competition during the season.
2. The image should have been taken during the past 12 months.
3. Composites are not accepted.
4. The image should be a "traditional photograph." For the purposes of clarity we are using the following definition:

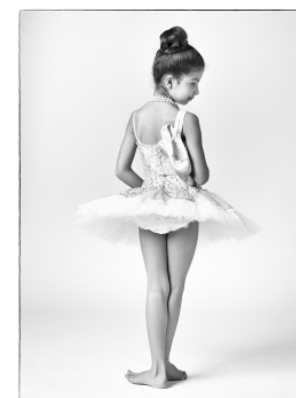
*FIAP Definition of Traditional Photography: A traditional photograph must maintain the original image content with minimal adjustments, which should not alter the reality of the scene and should appear natural. Rearranging, replacing, adding to or removing from any part of the image except by cropping is strictly forbidden. After satisfying the above requirements, every effort should be made to use the highest level of artistic skill in all photographs.*

5. It is also requested that no in-camera techniques be applied to the image.
6. The image should be submitted as an A4 unmounted print with the title on the reverse. (Block capitals please). The title should be sent to [beestoncameraclub.co.uk](mailto:beestoncameraclub.co.uk) by midnight on the Monday prior to the competition.

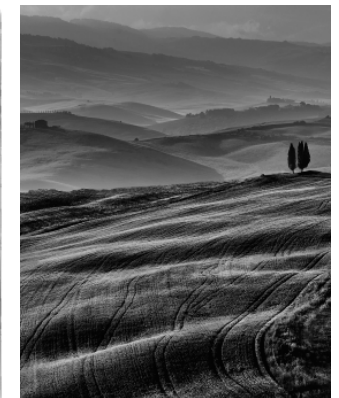
If you do not have access to a printer, arrangements can be made to produce a print for you if you contact the competition secretary on the above email. Or speak to a member of the Committee at a club evening. Prints should be brought on the night. They will be placed on tables around the room so that members can study them and vote for their favourites.



Much-binding-in-the-marsh, Celia Clayton



A little pas de deux, Dave Severn



The Wheat Field, Nick Hopwood



Marbelled white, Derek Martin



Canalside Refelctions, David Gibbins



Old Greaser, Trevor Lane



Cuban Social Media, Paul Taylor



Smooth Flow, Paul Screen



Ruddy Darter, David Hunt



Passer by, Linda Desmond

Beeston Camera Club, Royal British Legion, Hall Croft, Beeston, NG9 1EL.  
[www.beestoncameraclub.co.uk](http://www.beestoncameraclub.co.uk) | [enquiries@beestoncameraclub.co.uk](mailto:enquiries@beestoncameraclub.co.uk)



@BeestonCamera



Find us on  
Facebook

Beeston Camera Club